



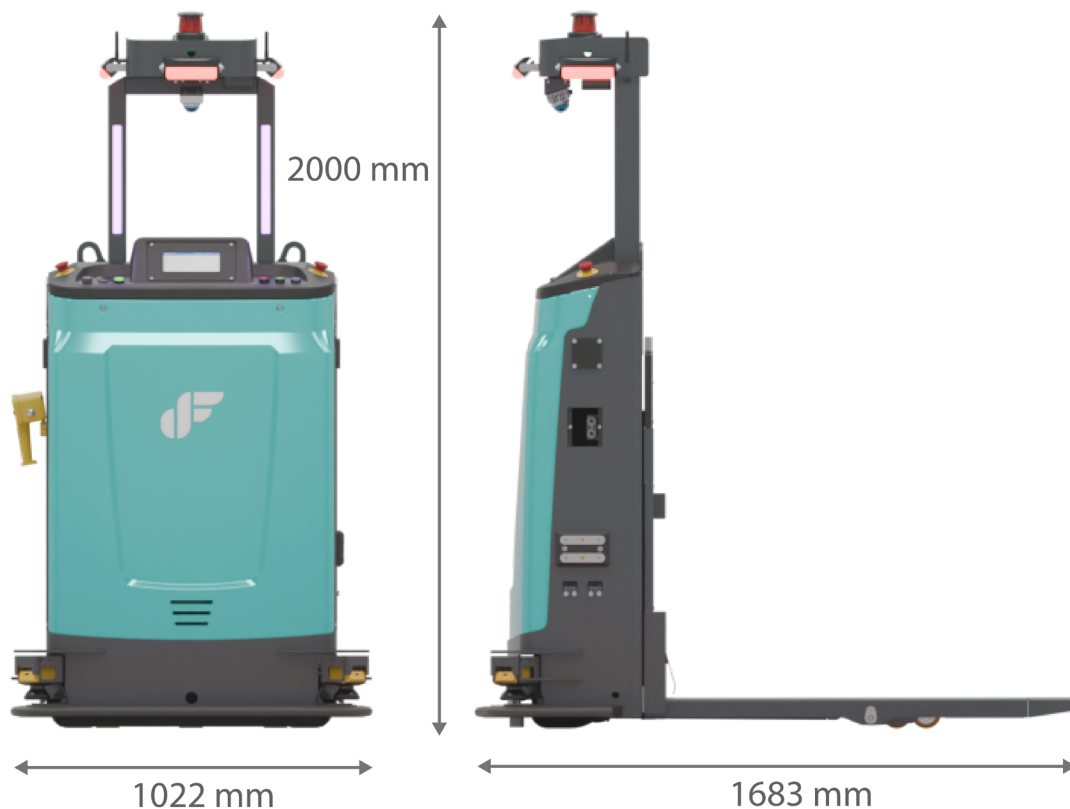
AUTONOMOUS MOBILE ROBOT

ZETHA



@dfautomation

AMR BASE



HIGHLIGHTS

Powered by DF Navwiz and
DFleet Software



Advance 3D
Camera technology



Up to 1.5 m/s
speed

3D LiDAR
Detection



LifePo4 Battery

Up to 8 Hours continuous operation



Carry up to
2000 kg



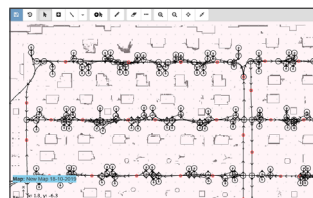
ACCESSORIES



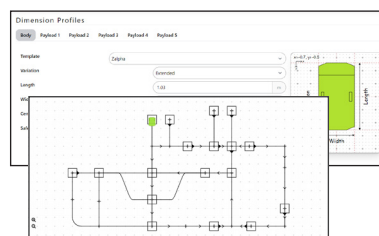
3000W Standard Charging Station

AMR OPERATING SYSTEM

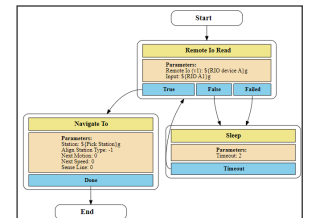
NavWiz
AMR Control &
Navigation Software



Mapping & Navigation



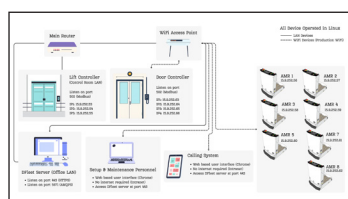
User Editor & Interface



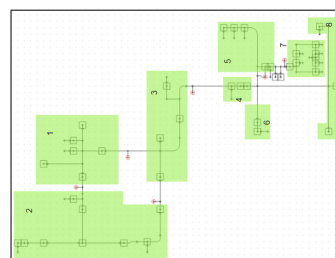
Flow Chart Programming

FLEET MANAGEMENT SYSTEM

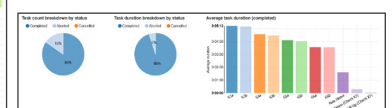
EDFleet
Fleet Management System
AMR Traffic Control
& System Integration



3rd Party Integration



Traffic Control



Reports & Analytics

SPECIFICATIONS

GENERAL

| | |
|---------------------|-----------------------------------|
| Base Dimension | L: 1683mm x W: 1022mm x H: 2000mm |
| Carry Payload | 2000kg |
| Lifting Height | 110mm |
| Fork Dimension | L: 1150mm x W: 175mm x H: 56mm |
| Fork Outside Spread | 650mm |

DRIVING & NAVIGATION

| | |
|-------------------|---|
| Driving System | Steering Drive |
| Navigation System | Natural Feature Navigation • Optional marker for precision |

PERFORMANCE

| | |
|----------------------|---|
| Maximum Speed | Unladen: 1.5m/s (5.4km/h) Laden: 1.2m/s (4.3km/h) • Travelling max speed is recommended to undergo Risk Assessment as well |
| Stopping Accuracy | Laser Sensor (Natural Feature): ± 50 mm, $\pm 2^\circ$ Laser Sensor (Marker/Docking): ± 10 mm, $\pm 1^\circ$ |
| Maximum Gradeability | 5% (2.86°) • Without curb • With rated payload • Permissible ramp is to ensure safety, although robot might be able to climb ramp with more than stated value but doing so will jeopardize robot's safety compliance |

SAFETY

| | |
|--------------------|--|
| Emergency Switch | 2 Units |
| Protective Devices | 2D Obstacle Laser Scanner x2 3D Obstacle Laser Scanner Physical Bumper Fork IR Sensor x2 3D Camera |
| Indicator | RGB LED Lighting Music Playback & Alarm |

INTERFACE

| | |
|------------------|---|
| Language | English |
| Operating System | Standalone (NavWiz) / Fleet Management System (DFleet) |
| Screen | 7", 1024x600 IPS HDMI Capacitive Touch Monitor |
| Communications | 802.11 a/b/g/n, 2.4GHz / 5GHz WiFi Open WiFi WPA & WPA2 Personal WPA & WPA2 Enterprise |

*Specifications may vary and are subject to revisions

DF AUTOMATION & ROBOTICS SDN BHD (1006594-V)

5, Jalan Impian Emas 18,
Taman Impian Emas,
81300 Skudai,
Johor, Malaysia



+607-283 0001



www.dfautomation.com



info@dfautomation.com